

A GREAT NEED

by Hafiz

Out
Of a great need
We are all holding hands
And climbing.
Not loving is a letting go.
Listen,
The terrain around here
Is
Far to
Dangerous
For
That.



How Connection to Nature can Support the Dismantling of Oppression.

New Story Group

January 22, 2024

Introduction

- Start at 0:0
- Stop at 1:47

Welcome to our 1st Speaker Series of 2023-24

The Egalitarian Principle: How Nature Connection
Can Support the Dismantling of Oppression

Dr. Paul Astin

Found and Director, Manzanita School & Institute

October 17, 2023

Paul Astin's Premises

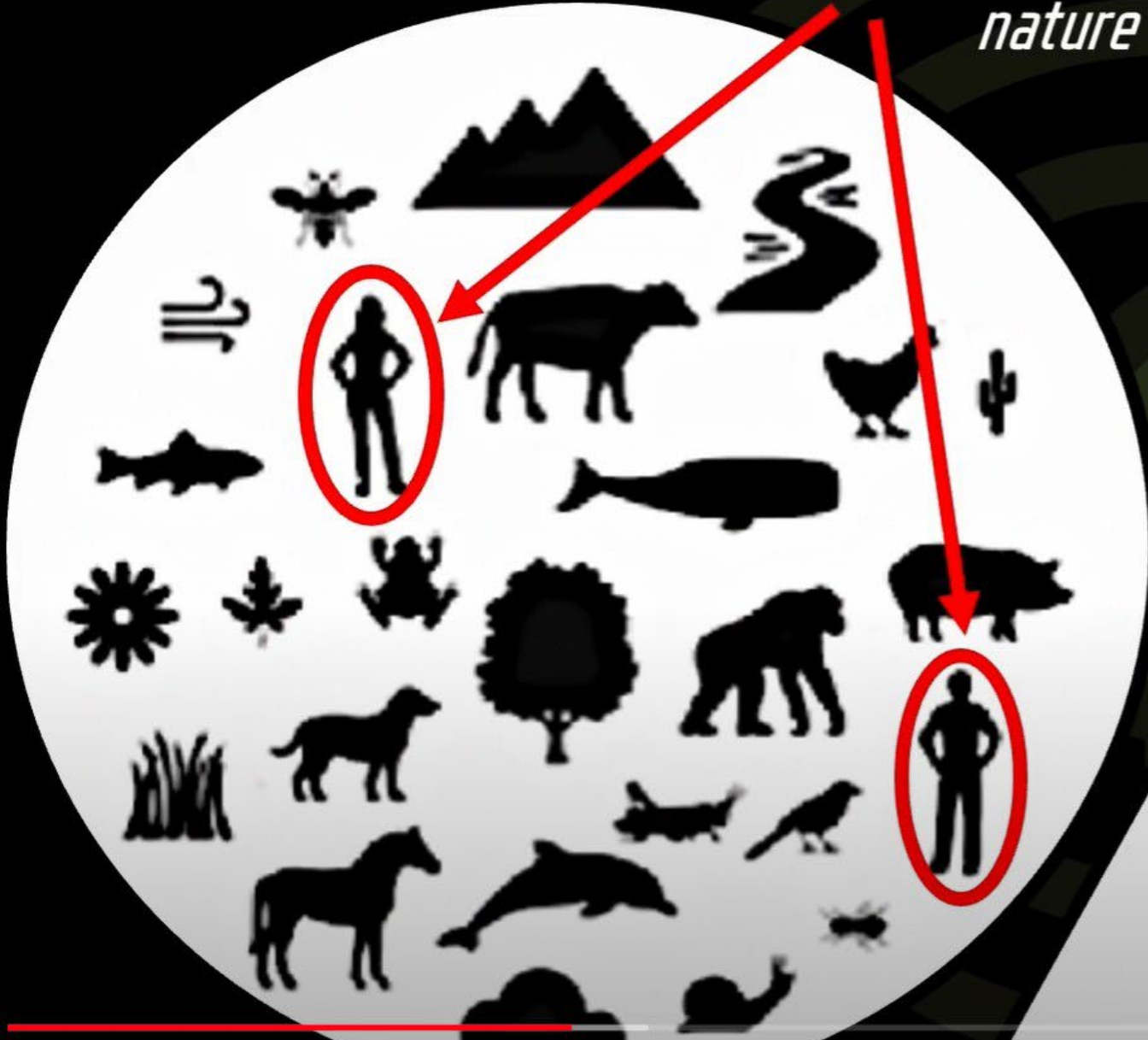
Premise #1: Humans are connected to the earth, but collectively, have lost an active sense of that connection

The background of the text box is black. It features a faint, dark green graphic of a stylized tree with three leaves and a trunk. To the right of the tree, the letters 'M' and 'M' are visible in a similar dark green color, partially overlapping the tree's branches.

If we understand that we modern humans are
'de-indigenized' peoples, if we can feel those
99% of our ancestors who were 'ecocentric'
in their worldview, we might more easily
retrieve our memories

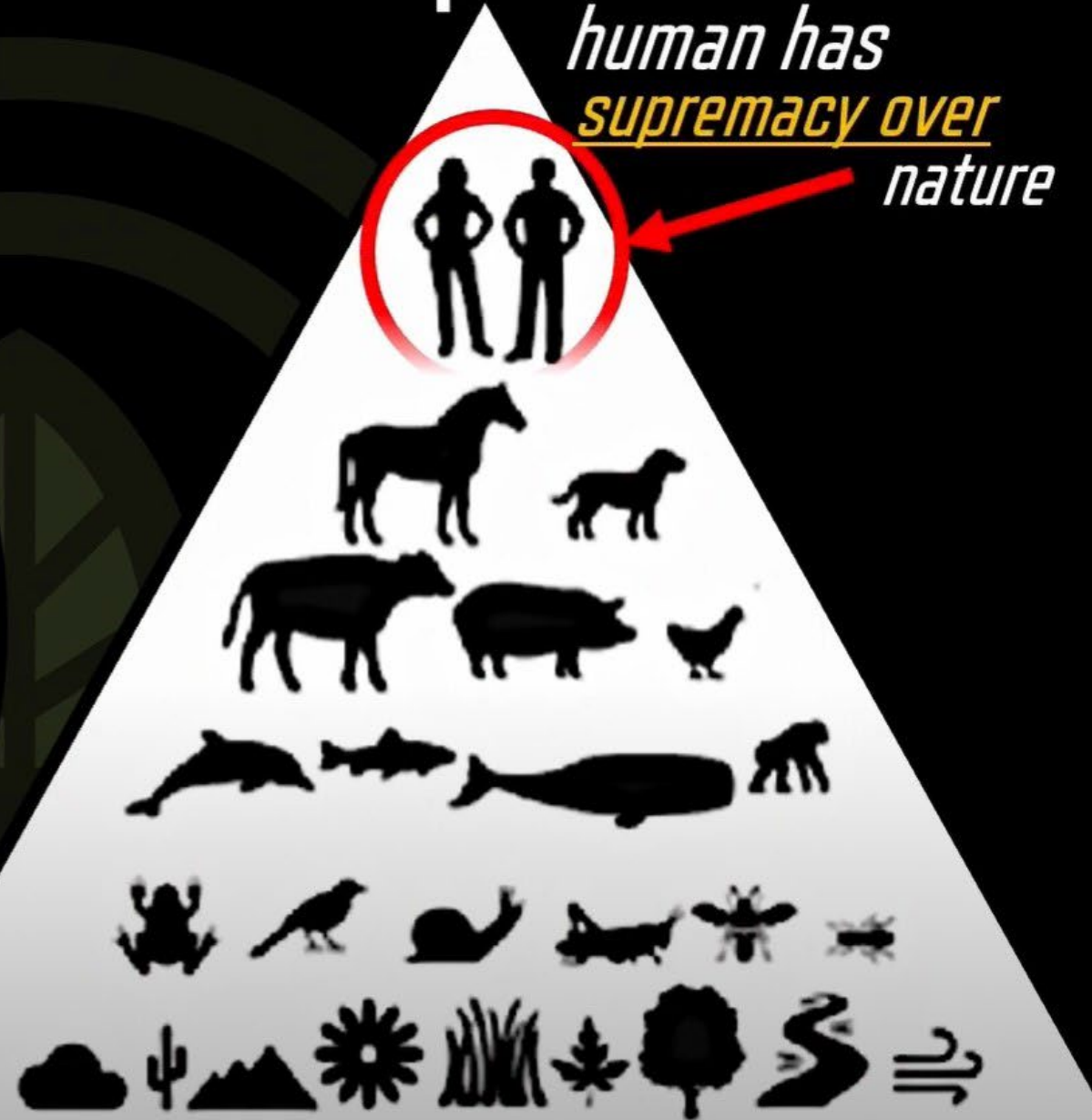
Ecocentric

*human is
centered within
nature*



Anthropocentric

*human has
supremacy over
nature*



Paul Atsin's Premises

Premise #2: The earth is alive. It is sentient and can communicate with us. The style of communication between human and earth, is different than how we humans communicate with each other.

Paul Atsin's Premises

Premise #3: People oriented to favor Human Dominance over other humans are expressing a pathology, the primary source of which may be our pronounced disconnect from wild nature

Paul Atsin's Premises

Premise #4: The primordial 'othering' in the story of the human species, is that which we have done to other non-human species. This came first. It was our separation from wild nature which has caused all other forms of domination.

Assessing Human Beliefs and Dominance

- There are numerous psychological and sociological tests that have been validated over many studies.
- Social Dominance Orientation test
- Social dominance orientation (SDO) is ... highly predictive of a multitude of antisocial attitudes and behaviors such as sexism, racism, and support for intergroup exploitation and violence.
- Individuals high in SDO have been shown to be less empathic and less pro-socially inclined towards social groups which are perceived as lower-ranked, even if the social groups are under threat and in need of assistance.” (Uenal, et al 2020)

Assessing Human Beliefs and Dominance

Social Dominance Orientation (SDO) is associated

- with lower levels of environmentalism,
- with climate change denial, and also
- with decreased climate change threat perceptions.
- (Costello & Hodson, 2010)

Assessing Human Beliefs and Dominance

Other tests highly correlated with Social Dominance Orientation

- Modern Sexism Scale
- Modern Racism Scale
- Right-wing Authoritarianism Test
- Human Supremacy Belief Scale
- Speciesism Scale
- Anthropocentrism Scale

Anthropocentric World Views

- Start at 29:07
- Stop at 35:09

Welcome to our 1st Speaker Series of 2023-24

The Egalitarian Principle: How Nature Connection
Can Support the Dismantling of Oppression

Dr. Paul Astin

Found and Director, Manzanita School & Institute

October 17, 2023

*Disconnecting from the wild earth was the first
separation*

‘findings in paleoanthropology, evolutionary and organizational psychology, and ethnology suggest..a co-evolution between ecological dominance and more hierarchically organized forms of social arrangements.” (Uenal,2022)

The 5 Premises

Premise #1: Humans are connected to the earth

Premise #2: The earth is alive and can communicate with us

Premise #3: Social Dominance Orientation (SDO) is a pathology born of being disconnected from nature

Premise #4: The first 'othering' among humans was dominance over nature, leading to all other forms of domination

Premise #5: Connecting to nature builds an ecocentrism and supports dismantling of racist, sexist, and dominator mentalities

Queries

- How do we manage individually and in small groups to walk with internal peace and love and hold the vision of what we want in the midst of a world that is falling apart?
- How do we create a world that works for all? That's when we need to hold each other's hands.